



Hungary, Lenti 8960 Sárberki tó part 1.


STARTING POINT




SÁRBERKI FISHING LAKE

Where are we?

The Sárberki fishing lake is located directly next to the town of Lenti. Lenti and the Kerka Valley are situated in the southwest of Hungary, near the borders with Slovenia, Croatia, and Austria. The town is located next to the M7 highway, leading towards the Adriatic.



 www.sarberkito.hu



SÁRBERKI HORGÁSZTÓ




Dear Reader!

The Sárberki fishing lake is a unique, lovely, well-maintained fishing and leisure center. Our location is excellent, not only because you can reach us on foot within a few minutes from the town, but we are also close to the highway and the border. Moreover, you can easily access the wonders of the surrounding area from us.

When you visit, we can not only be a beloved base but also a starting point. Your possibilities are endless, and there are numerous wonderful places you can quickly reach from us within the framework of a family-friendly excursion. This summary presents some of the captivating sights and opportunities in the area.

 +36306407621

 info@sarberkito.hu

 www.sarberkito.hu

Sights

IN THE LENTI AREA

BATHS



Lenti Thermal Bath and Saint George Energy Park

The Lenti Thermal Bath and Saint George Energy Park opened in 1978, just 15 km from the Slovenian-Hungarian border. Thousands of visitors come each year due to the beneficial effects of the 40,000-year-old thermal water gushing from the depths and the health-promoting benefits of the Saint George Energy Park. You can find more information at [Lenti](http://www.lentifurdo.hu/) <http://www.lentifurdo.hu/>.

Lendva Vinarium Tower

The gently rolling hills above the town are completely covered by meticulously cultivated vineyards. The new symbol of the Lendava wine hill, the daringly shaped Vinarium tower, stands 53.5 meters high and can be seen from afar. From the tower, you can simultaneously view the natural beauty of 4 countries (Slovenia, Hungary, Croatia, and Austria). You can find more information at <http://vinarium-lendava.si/hu/>.



VINARIUM

THEATER



The Makovecz Theater located in the center of Lendava. The building was completed in 2004 based on the plans of Imre Makovecz. The building can be visited from Monday to Friday from 8:00 AM to 2:00 PM. For groups, it is possible to arrange visits outside of working hours with prior notification. You can find more information at http://www.zkp-lendava.si/index_hu.php.

Szalafő, Pityeszer (Őrség National Park)

What makes it special is that, unlike other open-air museums, here the buildings are still in their original locations. The buildings of the Őrség Folk Heritage Complex have preserved the state of the 1700s. The buildings are still in their original environment today, with period-appropriate furnishings available for visitors. You can find more information at <https://www.szalafu.hu/>.



VILLAGE MUSEUM



NATIONAL PARK

Őrség National Park,

Szalafő Bison Reserve Őrség National Park encompasses the borders of a total of 44 settlements on approximately 44,000 hectares. The national park is also home to special animals that are rarely seen elsewhere in the country: these are the European bison, the largest terrestrial mammals on our continent. You can find more information at <http://www.szalafu.hu/>.

Göcsej Open-Air Museum in Zalaegerszeg

The Göcsej Open-Air Museum is the country's first open-air ethnographic museum. Within the museum's grounds, they have reconstructed a 19th-century Göcsej village where visitors can also become acquainted with everyday objects of the region. The Zalaegerszeg Open-Air Museum is a kind of essence of Göcsej. You can find more information at <https://gocsejiskanzen.hu/>



SKANZEN



FOREST RAILWAY

Csömödér – Kistolmács Forest Railway

The Csömödér State Forest Railway is the longest narrow-gauge railway network in Hungary, located in Zala County, with a total length of 109 kilometers. Its lines pass through charming villages, connecting numerous tourist attractions. You can find more information at <http://www.kisvasut.hu/>.

Lendava Castle

Perched above the city center in Lendava is the Lower Lendava Castle, with its snow-white walls and L-shaped structure. In addition to the wonderful views of the city and the surrounding vine-covered hills from the castle, it is worth visiting the historical and art exhibitions within its walls. A gallery and museum operate in the castle located in the center of Lendava. You can find more information at <https://www.gml.si/hu/az-intezetrol-belepodijak-es-arlistak-2/>.



CASTLE

WATER MILL



Szécsisziget Water Mill and Buffalo Reserve

Along the banks of the Kerka River, there used to be twenty-eight water mills in the past, but today, only one remains intact, which is the Szécsisziget Water Mill. The two-story water mill now operates as a museum and accommodation. You can find more information at <https://kerkavizimalom.hu/hu/>.

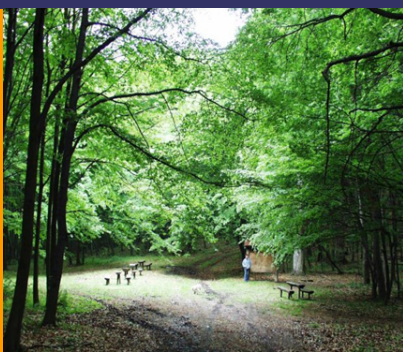
Szapáry–Andrássy Castle, Szécsisziget

The Szécsisziget Castle was once a noble residence, living quarters, and the center for economic and estate management. Today, the renovated building includes a residential wing with plastered walls and an adjoining granary. The castle now houses the Kerka Valley Nature Park Center and serves as the center for the South Zala Forest Landscape Bicycle Route. Cyclists visiting the area can find accommodation, food, and drinks in the building, and the castle can also assist with bicycle repairs and rentals. You can find more information at <http://www.szecsisziget.hu/nevezetessegek.html>.



CASTLE

FOREST EXCURSION



Vétyem Primeval Beech Forest, Tormafölde
Located southwest of Vétyem Puszta and between the Tormaföldi Creek and Csakó Valley in the vicinity of Tormafölde, this area has been a protected natural site for over 30 years. You can find more information at <http://www.budafaluus.hu/>.

EXCURSION TIPS

Dobronak and Its Surroundings

25 KM FROM SÁRBERKI FISHING LAKE

Energiapark



Natural Energy Park

Dobronak and its surroundings are endowed with healing energies, and those seeking healing regularly pilgrimage to the Energy Park surrounding the lake and to the Szent-Vid spring deep within the forest, whose water also possesses healing properties. Many energy points have been identified in this area, each with its own therapeutic effects.

Adventure Park



Bakonaki Lake Adventure Park

The park, designed to accommodate up to 100 people at once, is open to visitors from the age of 4 and up. Everyone can find obstacles suitable for their age, height, and fitness level among the 58 different tasks. Visit www.pustolovskipark.si/hu/ for more information.

Orchid Garden



Dobronak Orchid Garden

Central Europe's only orchid cultivation greenhouse operates here, where nearly 500,000 plants are nurtured annually. In the 14,000-square-meter greenhouse, heated with thermal energy, 160 different types of orchids are cultivated under tropical conditions. Next to the greenhouse, a 500-square-meter tropical garden has been created where you can get a close look at various tropical plants, including coffee, vanilla, pepper, pineapple, and the original environment of those tropical plants that we carefully preserve in our homes. Website: <http://www.tropskivrt.si/si>

Bakonaki Lake



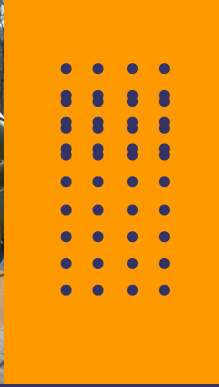
Bakonaki Lake

Located in the valley of the Bakonaki Stream, amidst the forest, the Bakonaki Lake covers an area of 8 hectares. It is of artificial origin and was originally created for flood protection purposes. In the immediate vicinity of the lake, you will find numerous gift shops, restaurants, and a playground, welcoming tourists of various age groups.

Active Recreation

ZALAEGERSZEG

42 KM FROM SÁRBERKI FISHING LAKE



Alsóerdő Sport and Adventure Park

Alsóerdei Sport and Adventure Park – In a fabulous environment, spanning over 3 hectares, Alsóerdei Sport and Adventure Park welcomes all guests seeking relaxation and sports activities! As a sports enthusiast, you can try the adventure park, where rope courses and climbing walls guarantee muscle soreness. You can prepare for skiing on the instructive ski slope, play basketball, soccer, or handball on high-quality outdoor sports fields, or work out in the outdoor fitness park (street workout). As a parent, you can freely allow your child to play in the playground or teach them the basics of safe traffic on our KRESZ track. You can even ski regardless of the season thanks to the SkyTechSport ski simulator. Need a break? You can refresh yourself at the café after your adventures. Source: <https://asep.hu/>



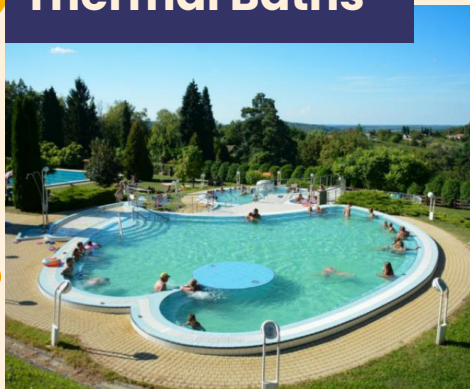
AquaCity Waterslide and Adventure

Located in a picturesque setting on the shores of Lake Gébárti, AquaCity Waterslide and Adventure Park in Zalaegerszeg offers unparalleled experiences and carefree entertainment on approximately 7.5 hectares of land. The aquatic paradise welcomes water enthusiasts of all ages with Central Europe's largest body of water, 6000 m² of water surface, numerous pools, slides, water, and land attractions.

Excursion Tips

BATHS

Thermal Baths



- Lenti
- Bázakerettye
- Lendva /Szlovénia/
- Moravske Toplice /Szlovénia

Lake Baths

- Borostyánlake Zalaalövő
- Csesztregi lake
- Kistolmács lake



Beach Baths



- Letenye Beach and Thermal Bath
- Lovászi

Sports for All

CYCLING



PATH NEAR SÁRBERKI FISHING LAKE

We love fishing, but we also enjoy cycling! Stay with us and take advantage of the cycling routes offered by Zala County and the Lenti region!

We are fortunate to have access to not only Zala County but also the Mura region in Lendava, making it possible to explore these areas by bike. The best part is that you can directly connect to the bike path right next to Sárberki Fishing Lake, so you can start your tour directly from your accommodation.

The landscape is enriched with numerous valleys and hills. Lenti city is situated along the Kerka River, near the Slovenian border. However, due to its proximity to the Croatian and Austrian borders, its location as a triple-border region offers excellent opportunities in the field of tourism. In terms of geographical regions, it belongs to the Hetés region among the Őrség-Göcsej-Hetés regions. Thanks to its rich natural values, the Lenti region is very popular among hikers and cyclists.

In Lenti and its surroundings, there are over 80 kilometers of well-established bicycle paths that guide hikers through the marvelous sights of the Kerka Valley. Active tourism is a primary element of bicycle tourism, and with a network of more than 80 kilometers of bicycle paths, Lenti and its surroundings are fully accessible for exploration by bike.

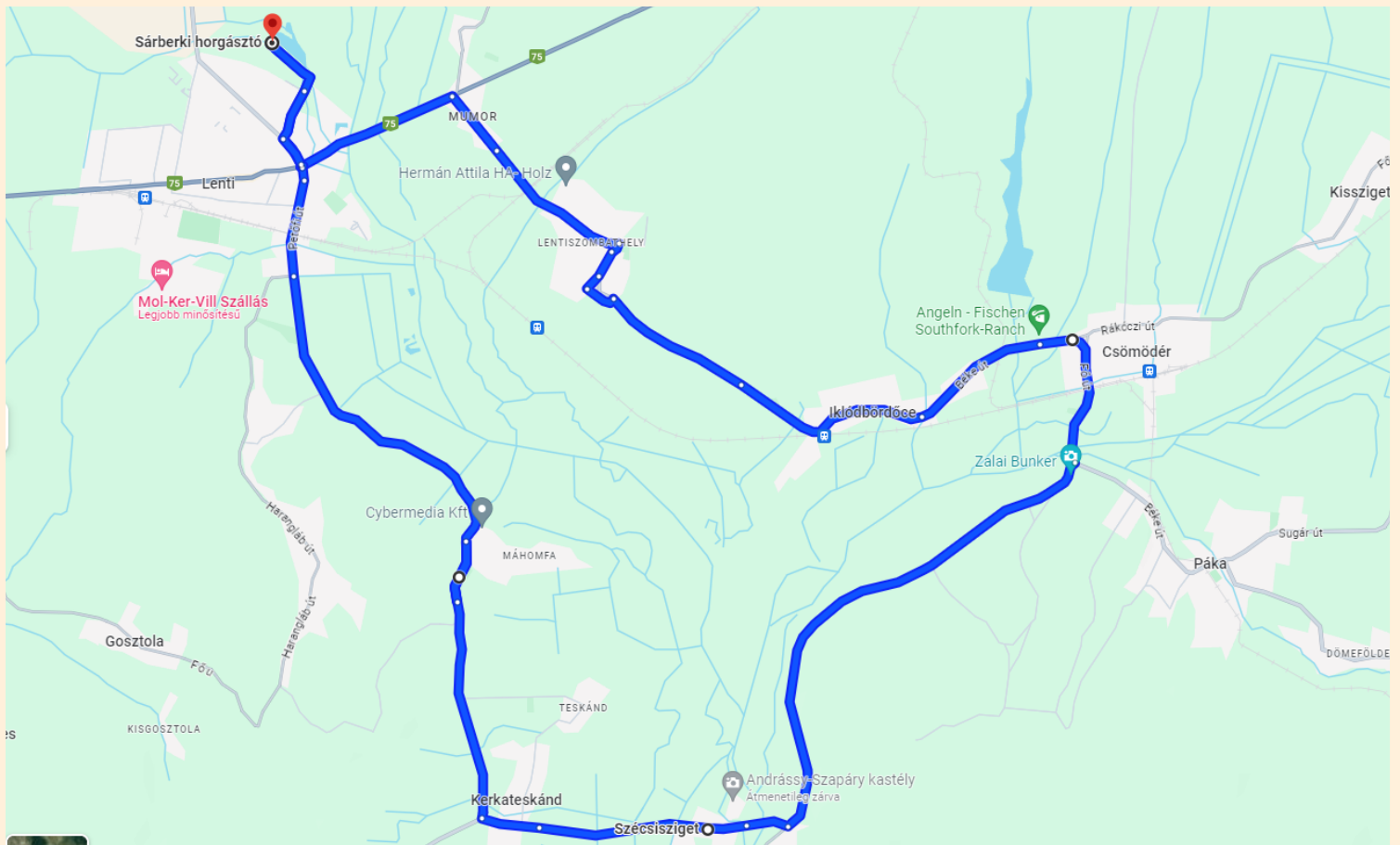
Lenti city is easily accessible by bicycle from all directions thanks to the established bicycle paths that connect the city with the residential areas outside the city (Lenti-Lentikápolna, Lenti-Mumor, Lenti-Szombathely, Lenti-Máhomfa). Furthermore, a bicycle path connecting the Lenti-Máhomfa district and Csömödér has also been completed.

Bicycle Tour Description

LENTI-SZÉCSISZIGET

ROUND TRIP DISTANCE FROM SÁRBERKI FISHING
LAKE: 27 KM

Lenti - Máhomfa - Kerkateskánd - Szécsisziget - Csömödér -
Iklódbördőce - Lentiszombathely - Lenti

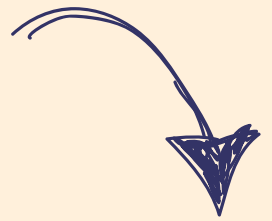


In the village of **Szécsisziget**, there are several historical landmarks, such as the **Andrássy-Szapáry Castle**, the Baroque-style Holy Cross Church, and an 18th-century watermill, which currently functions as a museum.



Within the village, there is a **buffalo reserve** whose purpose is to preserve the genetic diversity of domestic buffaloes. Following the main street and turning left after the church, you will reach the Andrassy-Szapáry Castle. The buffalo reserve area extends between the castle and the Kerka River. In fortunate circumstances, you can observe the buffaloes grazing in the park.

In the vicinity of **Szécsisziget**, there is a former watermill that currently operates as a museum. Continuing ahead, we cross the Kerka River and, upon reaching Újtelep, turn left towards Csömödér. Following the valley of the river, mostly on flat terrain, we need to cover a distance of five kilometers.



Csömödér is beautifully situated in a valley surrounded by forests and fields, on the right bank of the Cserta Creek. Forestry has been practiced in the village for a century. Csömödér is a member of the Central Zala Microregion Association, which offers a rich program to attract tourists.

In Csömödér, at the intersection, we continue to the left. After leaving the village, we once again cross the narrow-gauge railway. Immediately after, a dirt road on the right leads to the Csömödér Fishing Lake. A few hundred meters further, we reach the elongated Iklódbördőce.



In the vicinity of Lenti, in **Iklódbördőce**, there are several bike tours that allow you to explore the surroundings and traverse the hills of Zala. It's worth visiting the 13th-century Márok Chapel, located within the village's boundaries. The forest railway from Csömödér also passes through the village.



Leaving Iklódbördőce behind, you can already see the new buildings of the Creaton tile factory. A bike path leads from the factory along the road. In the outskirts of Lentiszombathely, the bike path diverges from the main road and reaches the streets of **Lentiszombathely** through a short but pleasant forested section. In the next bend of the main road, the bike path takes a detour towards the cemetery. At this point, it's worth stopping and taking a look at the wooden bell tower built in the village in 1760. From here, the bike path leads straight to **Lenti-Mumor**, where you turn left after crossing the main road. After a one-kilometer forested section, you'll arrive back in Lenti near the Castle.

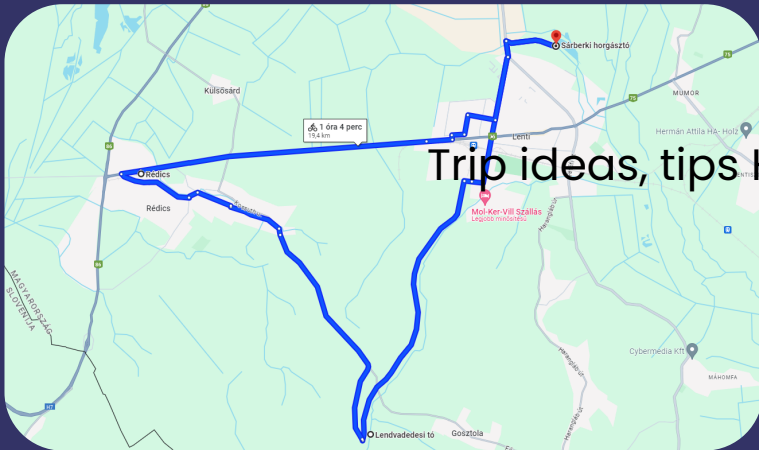


Hiking description source: www.funiq.hu

link: <https://funiq.hu/1229-zala-k%C3%A9t-ker%C3%A9ken-lenti-sz%C3%A9csisziget-26-km>

Bike tour routes

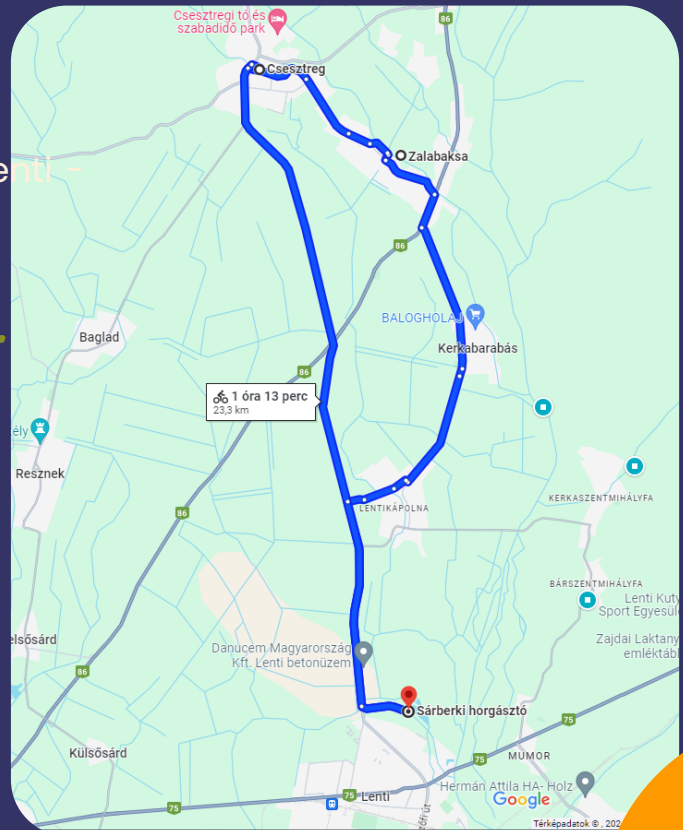
LENTI AND ITS SURROUNDINGS



Trip ideas, tips Hungary-zala

A trip to the neighbors - 21 km.
Lenti - Lendvadedes - Rédecis - Lenti

On paved road - Easy hike - 23 km Lenti -
Zalabaksa - Csesztreg - Lenti



In Zala and the Mura region - 48 km

Lenti-Rédics-Genterovci/Göntérháza-Lendava/Lendva-
Čentiba/Csente-Tornyiszentmiklós-Lovászi-Szécsisziget-Lenti

Hiking with a touch of Slovenia - 48 km

Lenti - Kerkateskánd - Szécsisziget (Bison Reserve, Szapáry
Castle, Watermill Exhibition, Church - Ecclesiastical History
Exhibition) - Tormafölde (Lookout, Wine Cellars, Fig Orchard,
Vétyemi Primeval Beech Forest) - Dobri - Tornyiszentmiklós -
Petesháza - Lendva - Rédics - Lenti

Zala Small Circuit, Easy Biking - 38 km

Lenti - Csesztreg (István-Gizella Bell Tower, Bathing Lake) -
Nemesnép (Bell Tower) - Márokföld (Adventure Park, Archery
Range, Energy Park, Yurt Camp) - Szentgyörgyvölgy -
Lendvajakabfa - Resznek - Lenti

... AND MANY MORE POSSIBILITIES!

Hungary, Lenti 8960 Sárberkit tó part 1.

ACCOMMODATION, FISHING, CAMPING

THE SÁRBERKI FISHING LAKE AWAITS YOU!

 +36306407621

 info@sarberkito.hu

 www.sarberkito.hu

